

Fig 1. The remains of Roman hydraulic gold mining in Las Médulas. Photo by B. Cech

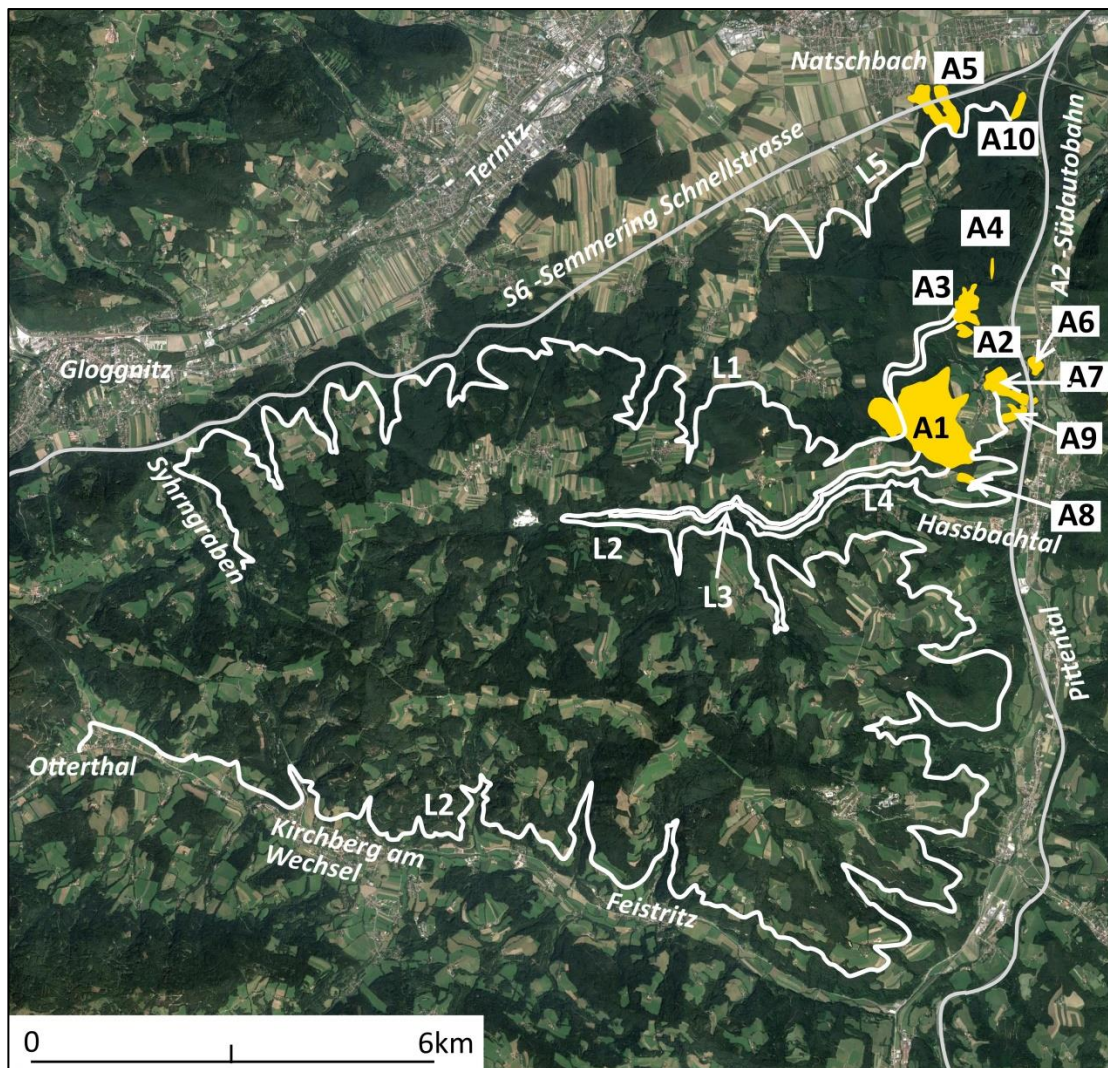


Fig 2. The "Karth": Overview of Roman goldmines and leats (A – Mining area, L – Leat) (Mapping: B. Cech) (Google Earth 2019: Image Landsat/Copernicus).



Fig 3. Remains of Roman gold mining in mining area 3: Heavily eroded gullies – view to the north.
Photo by F. Stremke



Fig 4. Tank 6 in mining area 3: The walls of the tank and the outlet to the mining area – view to the east. Photo by F. Stremke



Fig 5. Leat 1: Clearly visible, well-preserved channel – view to the west. Photo by B. Cech



Fig 6. Heather (*calluna vulgaris*) in the "Karth". Photo by F. Stremke

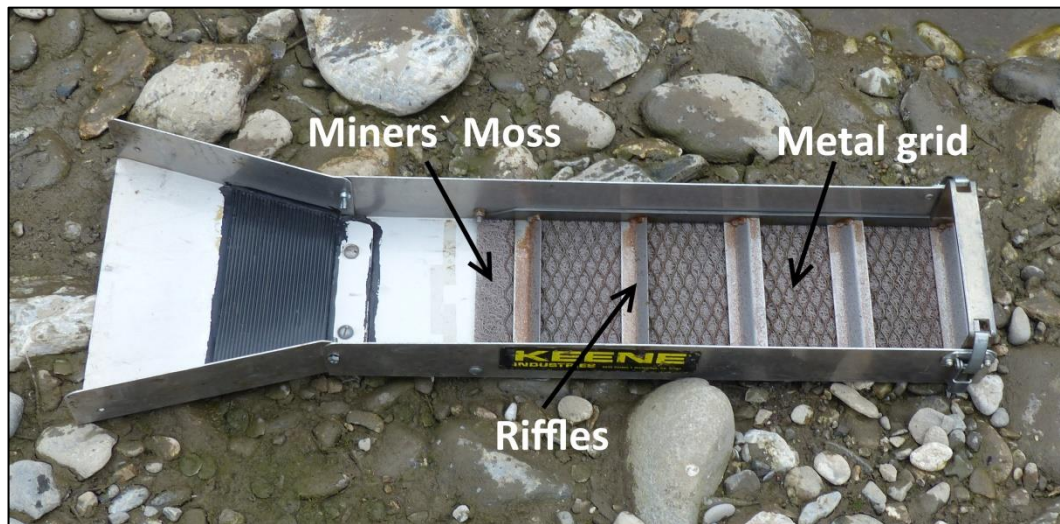


Fig 7. A modern sluice-box for gold-washing (Keene Engineering A52). Photo by B. Cech



Fig 8. The largest pieces of gold found so far in the "Karth" (1 – 0.256 g, 2 – 0.046 g, 3 – 0.039 g. Photo by R. Brandstetter

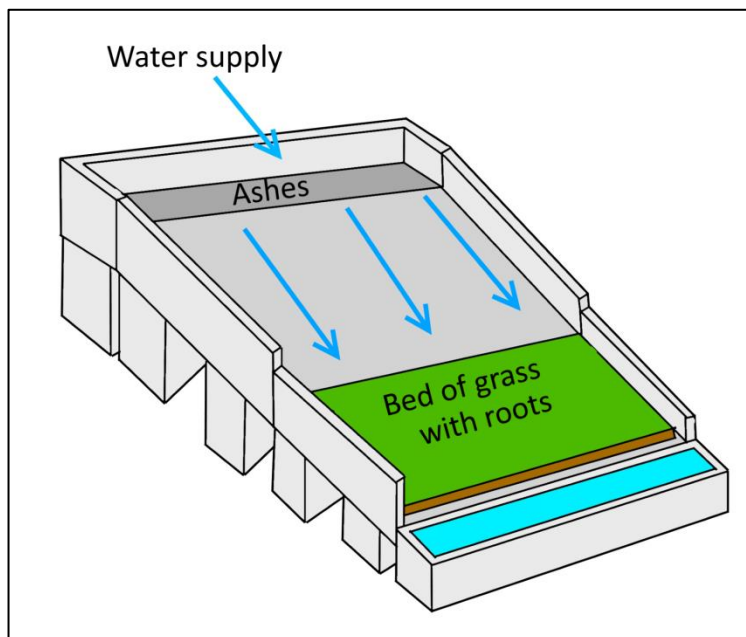


Fig 9. Reconstruction of a washing table with grass for washing the ashes of the heather (after López 2005, 67).

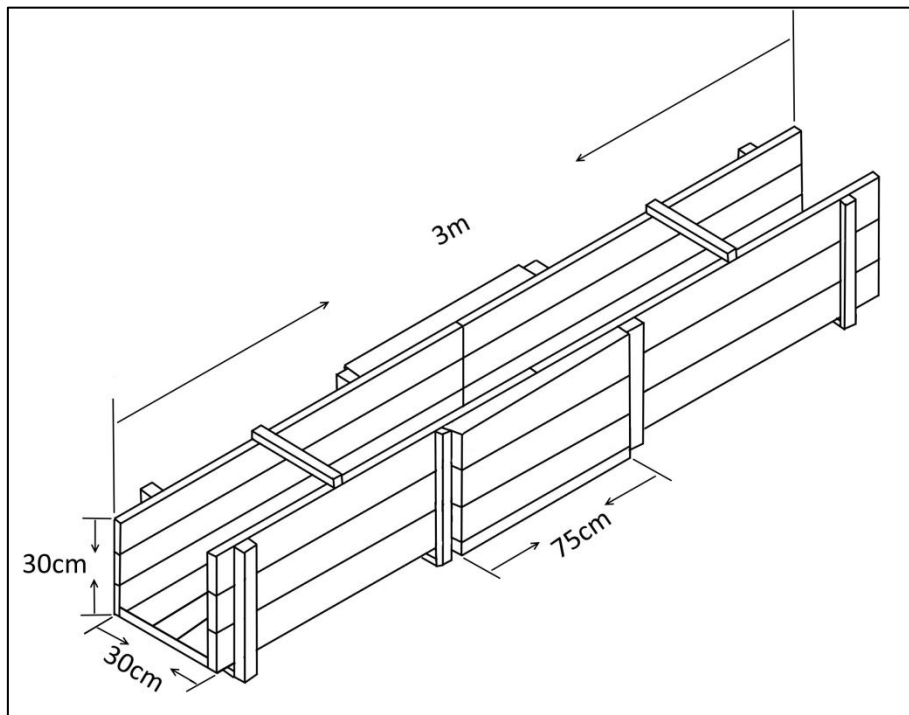


Fig 10. Technical drawing of the reconstructed Roman sluice-box. Image by F. Stremke



Fig 11. Assembling one half of the sluice-box . Photo by F. Stremke



Fig 12. Attaching the struts to one half of the sluice-box. Photo by B. Cech



Fig 13. Joining the two halves of the sluice-box. Photo by B. Cech



Fig 14. Attaching the wooden strips to the bottom of the sluice-box. Photo by F. Stremke

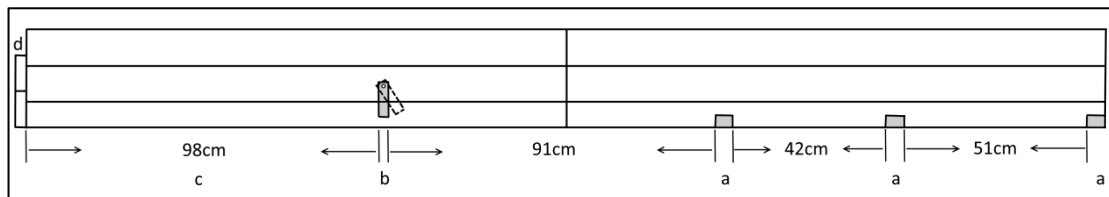


Fig 15. Section of the reconstructed sluice-box (a – wooden strips at the bottom, b – coarse separator, c – feeding area, d – boards enclosing the feeding area) . Image by B. Cech

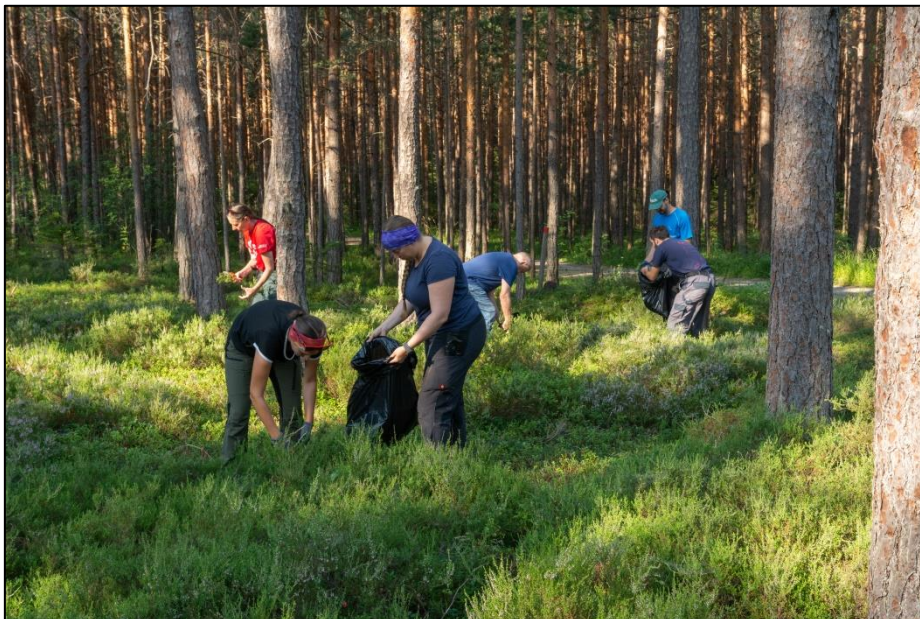


Fig 16. Gathering heather in the forest. Photo by F. Stremke



Fig 17. Lining the bottom of the sluice-box with heather and fixing it with thin wooden strips and twigs. Photo by F. Stremke



Fig 18. Mounting the sluice-box in the brook. Photo by F. Stremke



Fig 19. Shovelling gravel from the brook into buckets. Photo by F. Stremke



Fig 20. The reconstructed sluice-box in operation. Photo by F. Stremke



Fig 21. Keeping the sediment in constant movement while removing stones. Photo by F. Stremke



Fig 22. Heather saturated with black sand, with the modern sluice-box used for quality control in the foreground. Photo by F. Stremke



Fig 23. Removing the saturated heather. Photo by F. Stremke



Fig 24. Drying the heather. Photo by B. Cech



Fig 25. Burning the heather. Photo by F. Stremke



Fig 26. Using a pan to wash the black sand from the heather and also the ashes of the burnt heather. Photo by F. Stremke

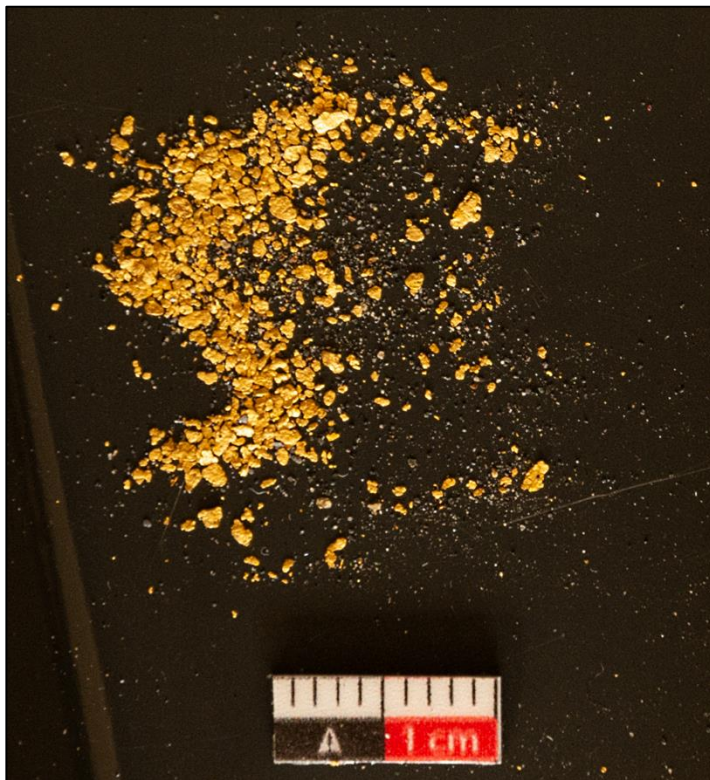


Fig 27. Gold obtained by washing gravel sediment with the reconstructed Roman sluice-box.
Photo by F. Stremke

The content is published under a Creative Commons Attribution Non-Commercial 4.0 License.

Roman Gold Washing as Described by Pliny the Elder

exarc.net/issue-2021-3/at/roman-gold-washing-described-pliny-elder

Persistent Identifier

<https://exarc.net/ark:/88735/10588>

Brigitte Cech and

Heimo Urban (AT)

EXARC Journal Issue 2021/3